

BOROUGH of KUTZTOWN

SACONY CREEK TRAIL CORRIDOR

MANAGEMENT PLAN, August, 2013

I. Overview

A Management Plan is an extremely useful tool for managing any preserve, park, trail corridor, open space, and school or business campus. This Management Plan for the Sacony Creek Trail Corridor is an attempt to incorporate the following “green” aspects into the management of this community asset:

- Provide safe and naturally interesting recreational opportunities to residents and visitors, primarily, walking, running, fishing, wildlife observation.
- Provide educational opportunities to residents and the Kutztown School District on water quality issues, natural history, and conservation (Note: Education efforts can serve to meet MS4 education requirements).
- Minimize maintenance costs and energy use by outlining and organizing tasks and maintenance schedules for upkeep of the trail corridor.
- Provide wildlife and riparian buffer habitat, essential to creek water quality.
- Extend the Sacony Creek Trail to North Park and other Borough parks and facilities.
- Participate in broader community initiatives by raising awareness of the Sacony Creek and the necessity for everyone to make positive contributions to the quantity and quality of surface and groundwater and associated drinking water supplies.
- Join the ranks - it should be noted: that Kutztown Borough has implemented a Management Plan on their wellhead properties; Saucony Meadows has leased some of their property to the Borough and planted trees as a buffer thereon; at least 7 (and counting) farmers upstream in the watershed have completed and implemented conservation plans and nutrient management plans; that the Kutztown Area School District Middle School has developed and is

implementing a Management Plan for their green campus infrastructure.

II. Property Description - baseline information

- A. Size – aerial map, topo map, see appendices.
- B. Geology – geology and soil maps, see appendices.
- C. Watershed – Sacony Creek watershed map, see appendices.
- D. Floodplain - yes, the entire trail corridor is in the floodplain.
- E. Wetlands - there are numerous small wetlands in the trail corridor; the trail ends at its southern terminus at the Sacony Creek Marsh, one of the few remaining freshwater marshes in Pennsylvania.
- F. Historic Land use - riparian corridor, wetlands, and floodplain.
- G. Current Land Use - active recreational trail corridor from Main St (northern terminus) to the observation deck and Sacony Marsh (southern terminus). Trail corridor also contains municipal water lines, sewer lines, stormwater outfalls, and electric powerlines.
- H. Plant Communities – good native plant composition under constant threat of degradation by diminished water quality, recreational use in sensitive areas, and invasive species.
- I. Animal Communities – high quality native plants provide habitat for many invertebrates, fish, amphibians, reptiles, birds, and mammals, see appendices.
- J. Invasive Plant Species - Invasive Species List, see appendices.
- K. Species of concern – yes; endangered animal species utilizes stream corridor for metapopulation movement and numerous plant species of concern utilize stream, sandbar, streambank, and wetland habitat.
- L. Photo inventory - Yes, see appendices.

III Management Goals and Objectives

A. Real Estate Aspects

- 1. Easements - Utility right of ways for sewer, water, stormwater and electric
- 2. Neighbor Relations - private landowners own portions of the trail and there are landowner agreements for trail access and management; there are also adjacent private landowners who do not own any portion of the trail corridor.
- 3. Municipality (location) - Borough of Kutztown and Maxatawny Township.
- 4. Municipal ordinances -

- a. Weed ordinance - yes, Kutztown Borough is exempt from their own weed ordinance, which allows for more robust vegetation.
- b. Stormwater ordinance – yes.
- c. Wellhead Protection ordinance - yes.
- 5. Municipal Water Supply - adjacent to the Borough of Kutztown’s municipal drinking water wells.
- 6. Municipal Zoning - Trail and riparian corridor are acceptable land uses.
- 7. County of Berks Planning - In sync with county planning - Trail and riparian corridor are recommended uses in the County of Berks 2006 Greenway, Park, and Recreation Plan.
- 8. Other Planning - Borough of Kutztown’s Sourcewater Protection Plan highlights importance of protecting the Borough’s drinking water supply by education and implementation of Best Management Practices for all land uses.

B. Resource Aspects, see accompanying Management Zone Map

Zone A – The Trail and Vegetation in the trail and riparian corridor

1. Resource Management objectives -

- To provide safe trail opportunities to residents and visitors for primarily walking, running, fishing, and wildlife observation.
- To provide educational opportunities to residents and the Kutztown School District on water quality issues, natural history, and conservation.
- To provide wildlife and riparian buffer habitat essential to water quality.
- To create a more extensive greenway corridor by connecting the Sacony Creek trail and riparian corridor to North Park and other natural/wild areas in the Borough and beyond.

2. Resource Management considerations –

- Trail is located in floodplain and is therefore subject to occasional flooding, which can result in trail surface erosion.
- Roots of vegetation are the most effective way to stabilize susceptible (to erosion) streambank soils.

- Significant County of Berks, Borough of Kutztown, Berks Conservancy, and private and donated funding including donated time were utilized to construct the trail, which included trail surface, streambank stabilization, benches, picnic tables, bird box erection, educational and informational signage aquatic habitat installation, kiosk installation, foot bridge(s) and observation deck installation, native tree, shrub, and wildflower/herb planting.
- Trail corridor has relatively good native species plant composition for an urban trail corridor but it is infested with some invasive species.
- Trail corridor activities for the most part are relegated to the trail itself but fishing has led to cutting and destruction of critical stabilization vegetation to gain unbridled stream access.
- County of Berks is the owner of the Normal Ave Bridge and is responsible for the bridge infrastructure and 50 feet on either side of the bridge
- Not all lands abutting the trail are owned or controlled by the Borough with possibility for disparate management regimes

3. Resource Management actions –

- Assign responsibilities within the Borough to manage and implement the following actions [Borough of Kutztown Public Works Committee]
- Convene an annual planning meeting in the 1st or 2nd week of January to discuss this Management Plan and the proposed management actions for the upcoming year [Public Works and EAC]
- Designate lines of communication between those participating in the implementation of the following actions primarily Borough Public Works Department and Borough EAC (which includes volunteers operating in conjunction with the EAC) [Public Works and EAC].
- Minimize trail surface erosion, pay close attention to stormwater generated off site; use surface screenings sparingly and with problematic areas use a sub-base of #2 stones. All stone surface applications need compaction. Monitor trail and locate problematic sections of trail [EAC]. Application of stone in fall after summer rains is an opportune time for repair [Public Works].

- Trail should be checked 2 times per year for overarching, overhanging, and hazardous vegetation which has or will encroach onto trail - hand pruning [EAC]. Heavy skilled work requiring chain saws will be done by [Public Works].
- Fallen trees will need to be dealt with on an as fallen basis [Public Works].
- Invasive species control follows the basic precept of let no invasive species weed go to seed. Prioritize the invasive species which are the biggest disruptions to local native plant communities and food webs [EAC, see the Invasive species list in appendices]. Break Management Zone A into Management sub-units to allow for greater and more focused volunteer help [EAC]. An existing Management sub-unit map is included in appendices; Management sub-units can be adjusted as needed. A Trail Ambassador program has been established to organize volunteers. Develop work plan for timing and methodology for controlling prioritized invasive species [EAC]. Note that some invasive species control measures may require the use of chemical weed control which requires a PA Dept of Ag. Pesticide License. If no one on the staff of Kutztown Public works possesses a Pesticide License, it may be worth investigating whether having a licensed applicator on staff makes financial sense [Public Works].
- Removal of large trees of invasive species, e.g., Norway maple, [Public Works].
- Contact the County of Berks and note the contact information for the person/office responsible for management of the vegetation on either side of the Normal Ave. Bridge. Bill Westcott, 610-478-6201
- Contact abutting landowners to discuss this management plan and its vegetation management strategies in order to gain management consistent with this plan [see attached property tax parcel map]
- Contact Kutztown Area School District to discuss outdoor maintenance activities to ensure there is no impact on the trail or streamside habitat. This is needed to prevent mowing beyond the trail and to prevent the dumping of any yard waste (e.g., grass, branches, soil, or other debris) along the trail.
- Identify key abutting properties and their landowners for future easements or purchase; Make note of the properties on Willow St. , PIN 544308981054 (2.137 acres) and PIN 544308980153 (0.913

acres) which had been considered in the past as valuable additions as trail buffer [Public Works]

- Recommend to Borough Council that an Official Map be developed which includes identification of key parcels for enhancing and/or extending the Sacony Creek greenway [Public Works and EAC]
- The Sacony Creek greenway should be extended downstream by investigating connection to North Park [EAC].
- Contact PFBC (Pa. Fish and Boat Commission) about receiving trail and stream corridor ethics signs to lessen impact of fisherman on vegetation and streambanks [EAC].

Zone B– the Trail and grey infrastructure in the trail corridor

1. Resource Management objectives –

- To provide safe trail opportunities to residents and visitors for primarily walking, running, fishing, and wildlife observation.
- To regularly maintain installed grey infrastructure of the trail corridor– trail surface, streambank stabilization, benches and picnic tables, aquatic habitat structures, culverts, waterways which convey stormwater, footbridges, kiosk, observation deck, signage, and bird boxes.
- To regularly maintain utility infrastructure of the trail corridor - sewer lines, waterlines, stormwater sewer outfalls, and overhead electric lines.
- To create a more extensive trail corridor by connecting the Sacony Creek trail corridor to North Park and other trails and areas of interest in the Borough.
- To work with the Kutztown Area School District on educational and interpretative aspects of the trail.

2. Resource Management considerations –

- Trail is located in floodplain and is therefore subject to occasional flooding which can result in trail surface erosion and other impacts.
- Significant County of Berks, Borough of Kutztown, Berks Conservancy, and private and donated funding/investment including donated time were utilized to construct and maintain the

trail since 2006 which includes trail surface, streambank stabilization, benches, picnic tables, bird box erection, educational and informational signage aquatic habitat installation, kiosk installation, foot bridge(s) and observation deck installation.

- Lawn areas around benches and picnic tables need frequent weed trimming to encourage usage.
- Trail is shared with Kutztown Area School District from Normal Ave to southern terminus at observation deck.

3. Resource Management actions –

- Assign responsibilities within the Borough to manage and implement the following actions- [Responsible entity is bracketed]
- Designate lines of communication between those participating in the implementation of the following actions primarily Borough Public Works Department and Borough EAC (which includes volunteers operating in conjunction with the EAC) [Public Works and EAC].
- Minimize trail surface erosion, pay close attention to stormwater generated off site; use surface screenings sparingly and with problematic areas use a sub-base of #3 stones. All stone surface applications need compaction. Monitor trail and locate problematic sections of trail [EAC]. Application of stone in fall after summer rains is an opportune time [Public Works].
- Create an annual Report Form which tracks management activities throughout the course of the year and which includes comments for improvement of the Plan and recommendations for the following year. The Report Form contains a checklist of maintenance items which are informed by monitoring the condition of the grey infrastructure items at least 2 times a year (before school ends in June and after school starts in late September) [EAC and Public Works] - Items to include trail surface, signs, footbridges, benches, picnic tables, kiosk, observation deck, and bird boxes.
- Contact the Kutztown Area School District to discuss ways to partner on: the existing educational signage; the kiosk which is in need of information posting; activities utilizing the riparian corridor; on management actions on all of their campuses which affect the water quality of the creek and habitats in the riparian

buffer. It should be noted that the Kutztown Middle School is working on a Management Plan for the Green Infrastructure of their campus.

Zone C – Riparian buffer between Constitution Blvd. and the Sacony Creek

1. Resource Management objectives –

- To maintain riparian areas in a way which keeps trash generated at the adjacent shopping center out of the creek water and the riparian buffer.
- To maintain riparian areas in a regime that minimizes maintenance costs and energy use.

2. Resource Management considerations

- Participation in broader community initiatives by raising awareness of the Sacony Creek and the necessity for everyone to make positive contributions to the quantity and quality of surface and groundwater and associated drinking water supplies.
- Significant amounts of trash are being generated by consumers at the shopping center. The prevailing winds blow the trash into the Sacony Creek and the trail corridor.

3. Resource Management actions –

- Encourage small shrubs and wildflowers/herbs to provide living screen to catch trash. Existing plants can be left to grow and new plants can be planted where needed [EAC]. A mower's width should be mowed between the Constitution Blvd. road surface and the unmowed living screen [Public Works].
- Install posts with riparian buffer signs between the creek and Constitution Ave. to designate the area to be maintained as a riparian buffer.
- At the Borough owned open area near Constitution and Normal Ave., continue to mow the sewer line and 10' on either side once or twice a year to avoid woody regeneration and keep access open. Mow as needed between installed woody trees, adjacent to neighbors and which serve as a buffer to residential impacts on water quality. As time goes on and neighbors change, reduce and

ultimately eliminate mowing between trees. Continue the no mow policy of the riparian buffer between the sewer line and the creek [Public Works].

- Work with shopping center owners to provide refuse receptacles to limit trash leaving the shopping center[Codes].
- Contact shopping center about volunteer cleanups.
- Install littering signs with fines at the shopping center [Codes].

Zone D – Private Field, adjacent to observation deck

1. Resource Management objectives -

- To provide educational opportunities to residents and the Kutztown School District on water quality issues, natural history, and conservation.
- To provide wildlife and riparian buffer habitat essential to water quality.
- To create a more extensive greenway corridor by connecting the Sacony Creek riparian corridor to other natural/wild areas.
- To create a buffer for the Sacony Marsh from the activities on the Kutztown Area School District.

2. Resource Management considerations

- The current owner of the Sacony Marsh and the small field adjacent to and south of the observation deck is Harlan Burkholder. In Harlan Burkholder's approved USDA Conservation Plan, the ~ 20.20 acre Sacony marsh, riparian corridor, and this field are designated as wildlife habitat. As part of initiative which designated the Sacony Marsh as Wildlife Habitat, the Borough of Kutztown in 2008 entered into a lease with the Berks Conservancy for ~ 15 acres of Borough farm fields that were converted from tillage and high fertilization crops (corn and beans) to low input crops, namely, grass/hay.
- Invasive plants, especially Canada thistle (*Cirsium arvense*), are starting to expand in the meadow and should be controlled before they get out of hand.

- The meadow frequently collects trash from activities at the school district athletic fields.

3. Resource Management actions –

- Contact Harlan Burkholder, or any subsequent owner, each year in winter time to discuss the timing of mowing his small field adjacent to the observation deck. Best timing is March or April before April 15 and the beginning of the ground nesting bird breeding season. Field should be mowed every 1 to 3 years, as conditions allow, to prevent woody plants from succeeding. In years when it is too wet to mow, woody plants should be removed by hand cutting [EAC and volunteers].
- Canada thistle and other invasive plants should be removed by hand every May and June before the plants go to seed.
- Contact high school regarding the year-round maintenance of a trash can near the meadow and student trash cleanups of the meadow.

Zone E – Borough owned open space between pool and Normal Ave.

1. Resource Management objectives -

- To create a buffer between the trail and riparian corridor and any adjacent land use.
- To reduce maintenance and energy costs associated with trail corridor management.

2. Resource Management considerations

- Provide wildlife and riparian buffer habitat essential to creek water quality.
- Participate in broader community initiatives by raising awareness of the Saucony Creek and the necessity for everyone to make positive contributions to the quantity and quality of surface and groundwater and associated drinking water supplies.
- Join the ranks - it should be noted: that Kutztown Borough has implemented a Management Plan on their wellhead properties; that Saucony Meadows has leased some of their property to the Borough and planted trees as a buffer thereon; that no less than 7 (and

counting) farmers upstream in the watershed have completed and implemented conservation plans and nutrient management plans; that the Kutztown Area School District Middle School has developed and is implementing a Management Plan for their green campus infrastructure.

- The dumping and subsequent melting of salt laden snow likely will affect water quality in the Sacony Creek. PA DEP recommends dumping snow in areas a minimum of 100 ft from surface waters and where it can melt with minimal impact on natural resources.

3. Resource Management actions –

- Create an unmowed buffer of 20 feet between the trail and the mowed area used for overflow vehicle parking at swimming pool. There should be a one mower width swath cut immediately adjacent to the trail to prevent vegetation from overhanging into the trail and the need to mow such overhang [Public Works].
- Continue to investigate alternative areas for snow dumping in Kutztown away from the Sacony Creek and wellheads to prevent any negative impact of saline snow melt on water bodies and the storm sewer system which conveys the run-off [Public Works and EAC].

IV Operations and Maintenance - the following sections to be filled in when Management Plan is approved and points of contact are established

1. Work Plan, 3-5 year - 2013-2015 - currently developing for 2013
 - a. Zone A - EAC uses report form/checklist and develops list of vegetation needs and implements removals of invasive herbaceous plants and shrubs, EAC submits list to Public Works for removal of hazardous and invasive trees.
 - b. Zone B – EAC uses report form/checklist and develops list of of grey infrastructure tasks. EAC submits list to Public Works and specifies which tasks they are capable of.
 - c. Zone C – EAC develops plan for demarcating the mow line along Constitution and submits to Public Works for review and implementation;

Codes meets with shopping center owners to develop trash receptacle and littering sign plan.

- d. Zone D – EAC contacts Berks Conservancy who contacts Harlan Burkholder (owner) about maintenance plan for spring 2013.
 - e. Zone E - EAC develops plan for demarcating mow line to create buffer between lawn and trail and submits plan to Public Works for review and implementation. EAC and Public Works investigate alternative snow dumping sites.
 - f. Entire Area – EAC and volunteers from Kutztown University update the plant and animal species inventories to document species present in the area. Knowledge of biodiversity will help direct management recommendations and actions.
- 2. Stewardship or Management Fund with annual stipend or Budget Line Item with annual allocation - \$
 - 3. Work Plan Project budgets, 2013 – currently developing for 2013
 - a. Zone A
 - b. Zone B
 - c. Zone C
 - d. Zone D
 - e. Zone E
 - 4. Staff responsibilities – currently developing for 2013
 - a. Zone A
 - b. Zone B
 - c. Zone C
 - d. Zone D
 - e. Zone E

V. Reporting

- 1. Annual report Form and Checklist

VI. Management Plan Review and Update - As with any living document, the Sacony Trail Management Plan should be reviewed and updated every 5 years after its initial approval.

VII. Acknowledgements – list of people involved with development of the plan

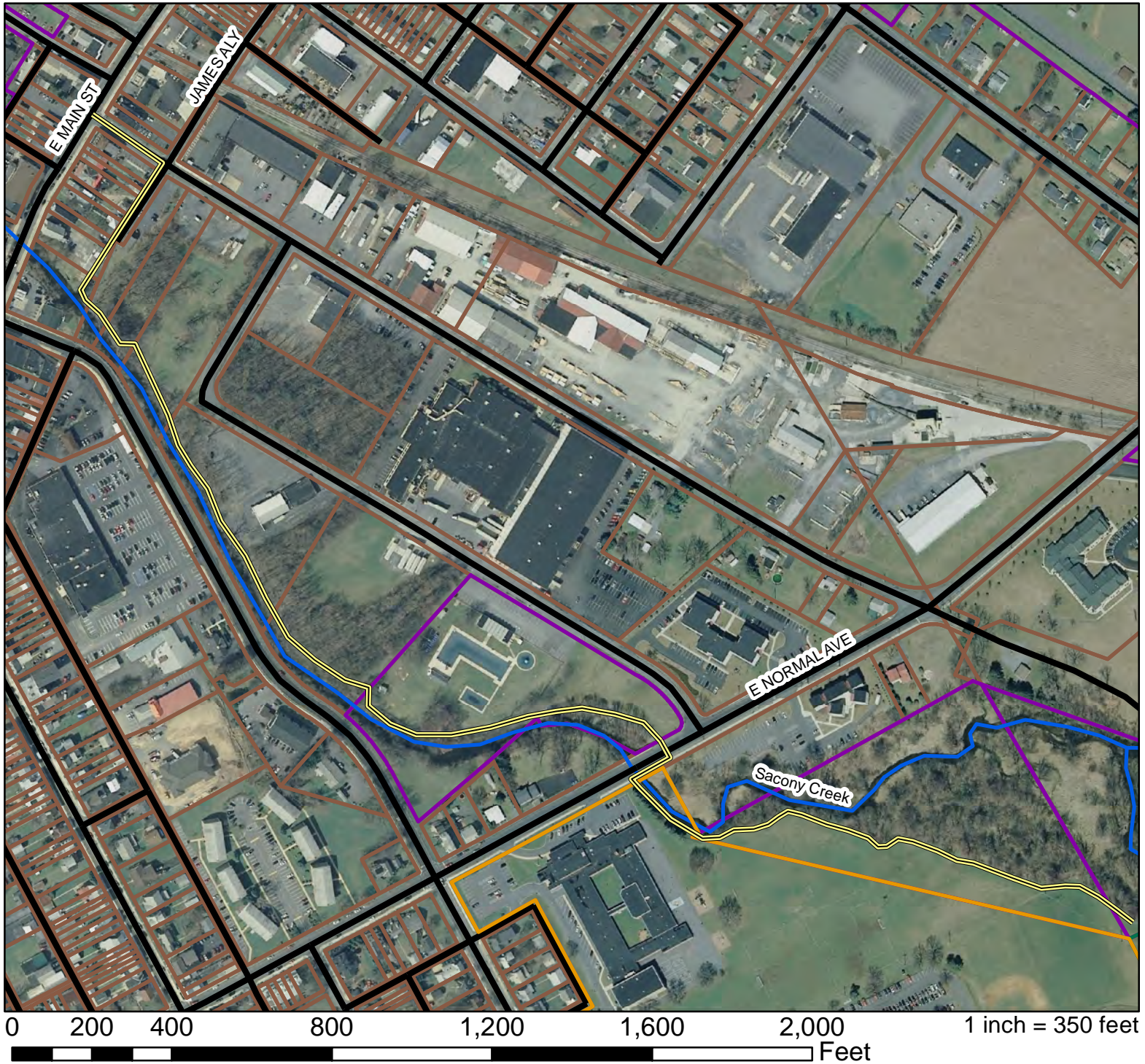
- Borough of Kutztown Environmental Advisory Committee
- Borough of Kutztown Public Works Committee
- Brian Bailey, Borough of Kutztown Public Works
- Larry Lloyd, Berks County Conservancy
- Elaine Bartholomew, Maidencreek Watershed Association

VIII. Appendices/References

1. Maps- aerial; topographic; soils; geology; watershed; regional context; management zones; management sub-units; photo map key and photos
2. Informational pamphlet, “ Caring for your Streamside property”
3. Stormwater Education brochure
4. Green Guide for Property Management, booklet
5. Creating Sustainable Community Parks, booklet
6. Copies of private landowner agreements for trail usage
7. Invasive Plant Species List
8. Plant Species Inventory
9. Animal Species Inventory
10. Photo Inventory
11. The Official Map: A Handbook for Preserving and Providing Public lands and Facilities
12. County Tax Parcel Map with Neighboring private properties noted

Saucony Trail - Kutztown Borough

Management Plan Aerial Map



Saucy Creek Trail From Main Street to Kutztown area schools

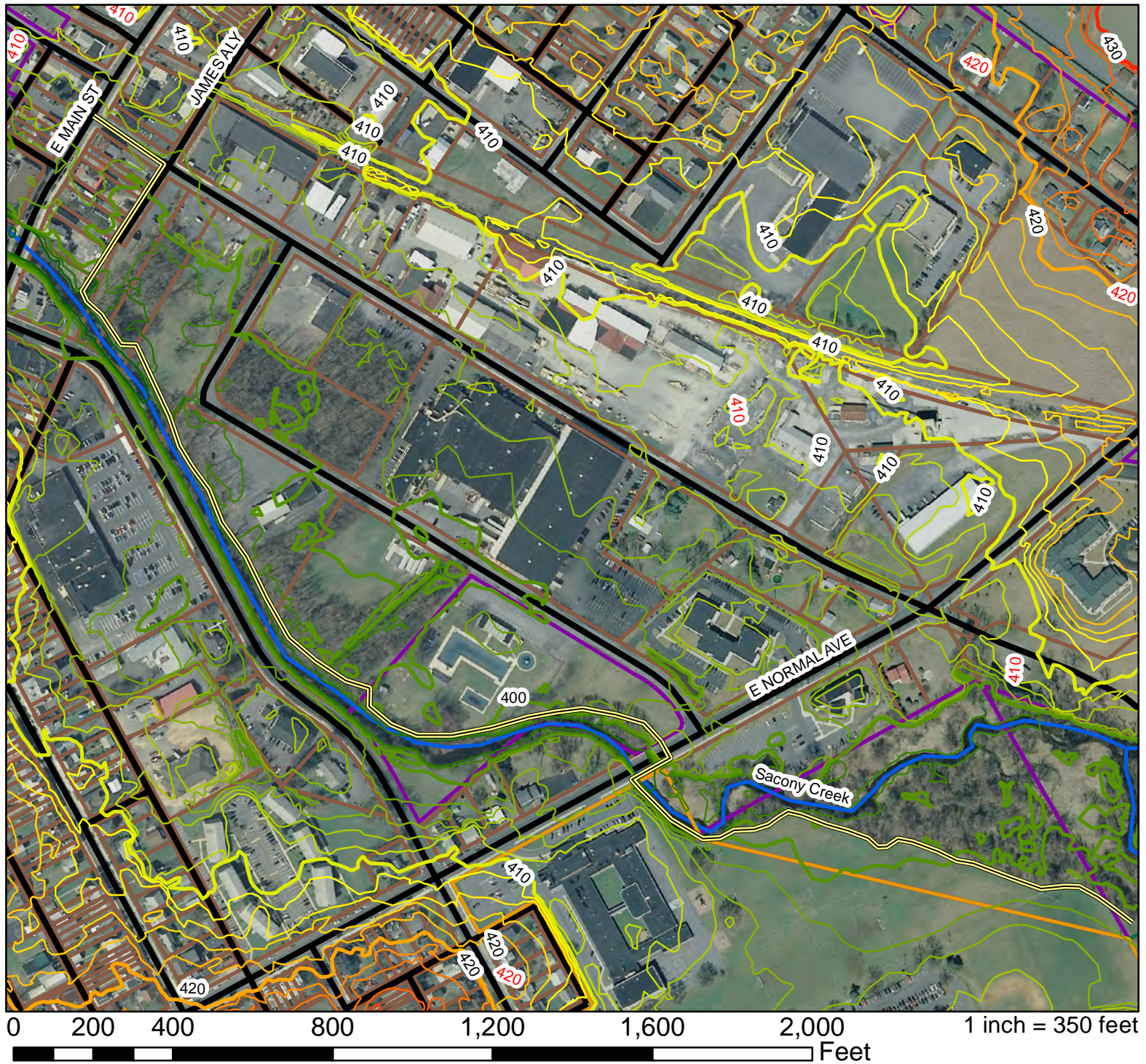
Legend

- Saucy Creek Trail
- Kutztown Area School
- Borough Property
- Streams
- Roads



Saucony Trail - Kutztown Borough

Management Plan Topo Map



Saucony Creek Trail From Main Street to Kutztown area schools

Legend

- Saucony Creek Trail
- Kutztown Area School
- Borough Property
- Streams
- Roads

Topo

- | | | |
|-----|-----|-----|
| 394 | 406 | 420 |
| 396 | 408 | 422 |
| 398 | 410 | 424 |
| 400 | 412 | 426 |
| 402 | 414 | 428 |
| 404 | 416 | 430 |
| | 418 | |

Saucony Trail - Kutztown Borough







Acreage Map



**Saucony Creek Trail
From Main Street to
Kutztown area schools**

Total Acres: 9.54

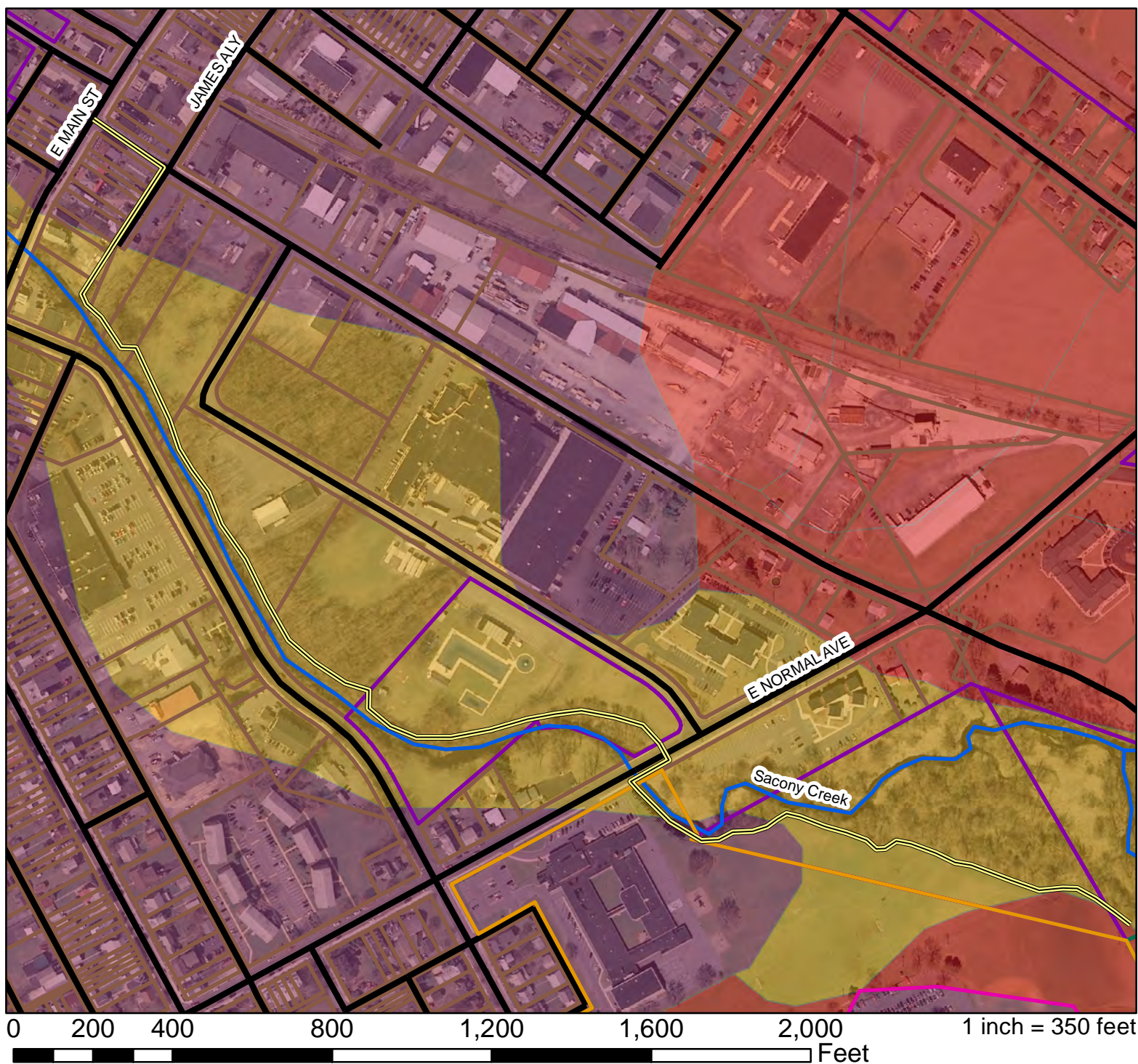
Legend

-  Acreage
-  Saucony Creek Trail
-  Kutztown Area School
-  Borough Property
-  Streams
-  Roads

Maps Prepared by:
Berks Conservancy
January, 2013
25 N 11th Street
Reading, PA 19601
610-372-4992

Saucony Trail - Kutztown Borough

Management Plan Soil Class Map



**Saucony Creek Trail
From Main Street to
Kutztown area schools**

Legend

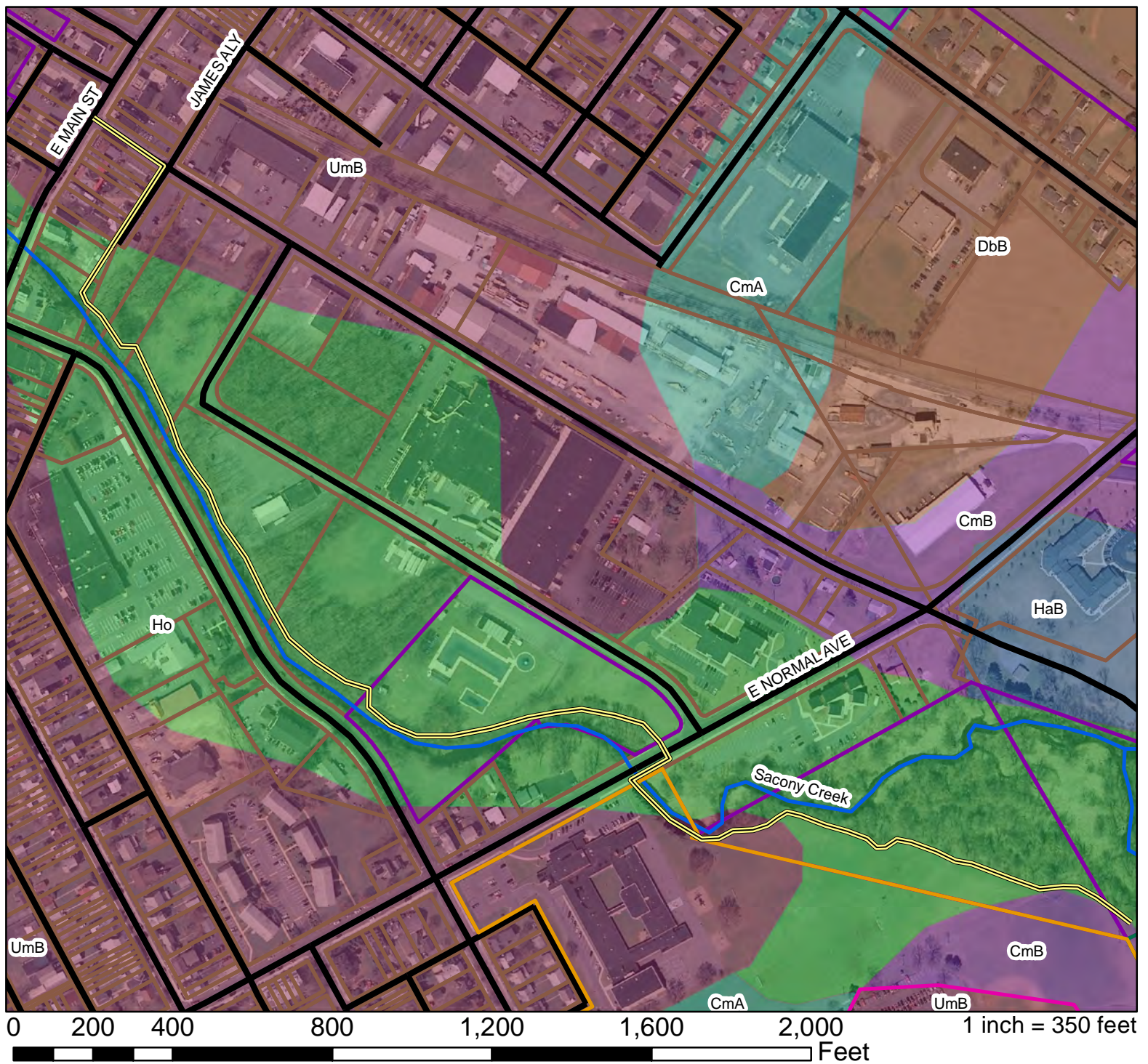
- Saucony Creek Trail
- Kutztown Area School
- Borough Property
- Streams
- Roads

Soils Class

- 2
- 3
- 8

Saucony Trail - Kutztown Borough

Management Plan Soil Type Map



Saucy Creek Trail From Main Street to Kutztown area schools

Legend

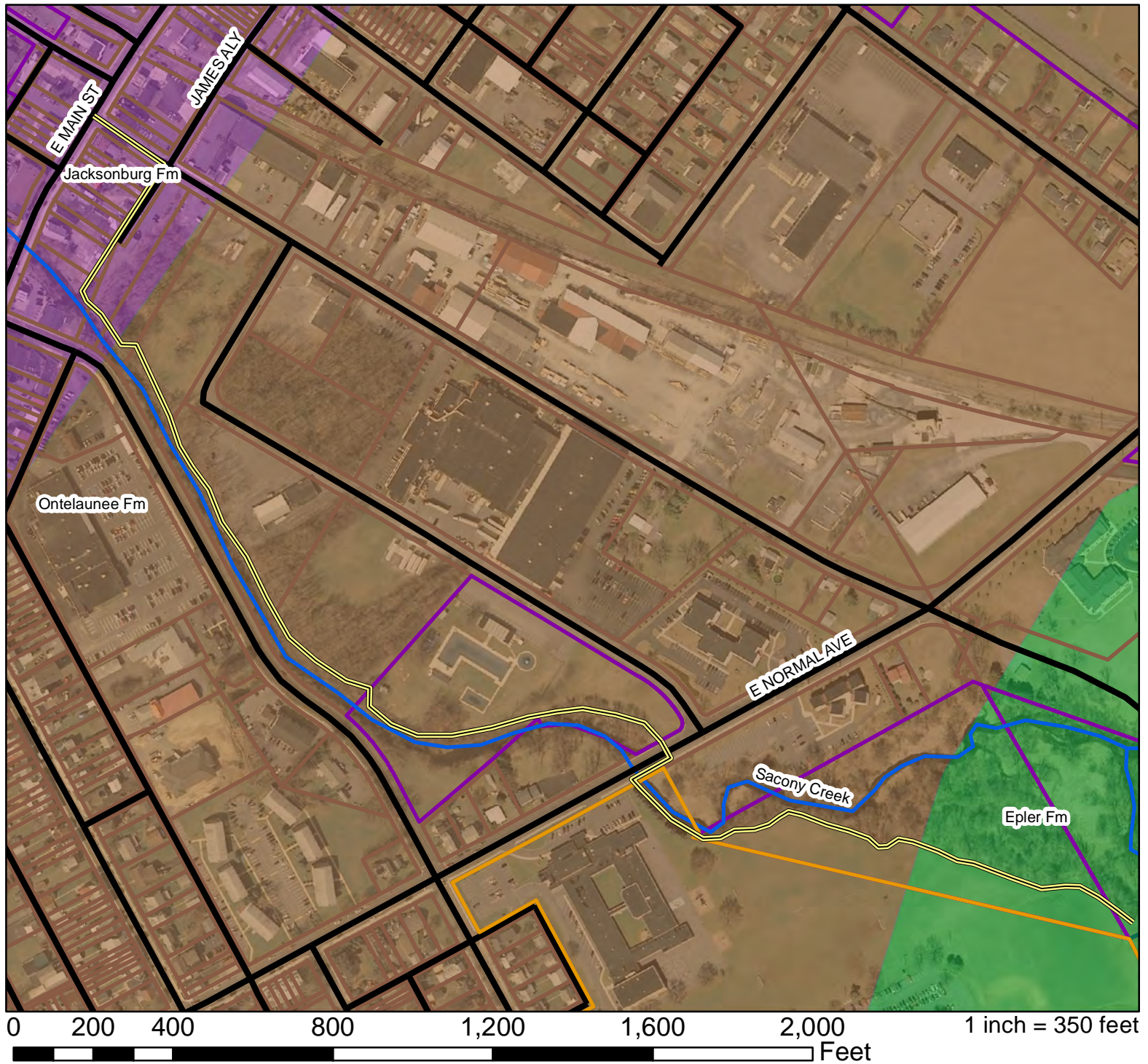
- Saucy Creek Trail
- Kutztown Area School
- Borough Property
- Streams
- Roads

Soils Type

- | | | |
|-----|-----|-----|
| DfD | CmA | HaB |
| CmB | Ho | UmB |
| DbB | | |

Saucony Trail - Kutztown Borough

Management Plan Geology Map



Saucy Creek Trail From Main Street to Kutztown area schools

Legend

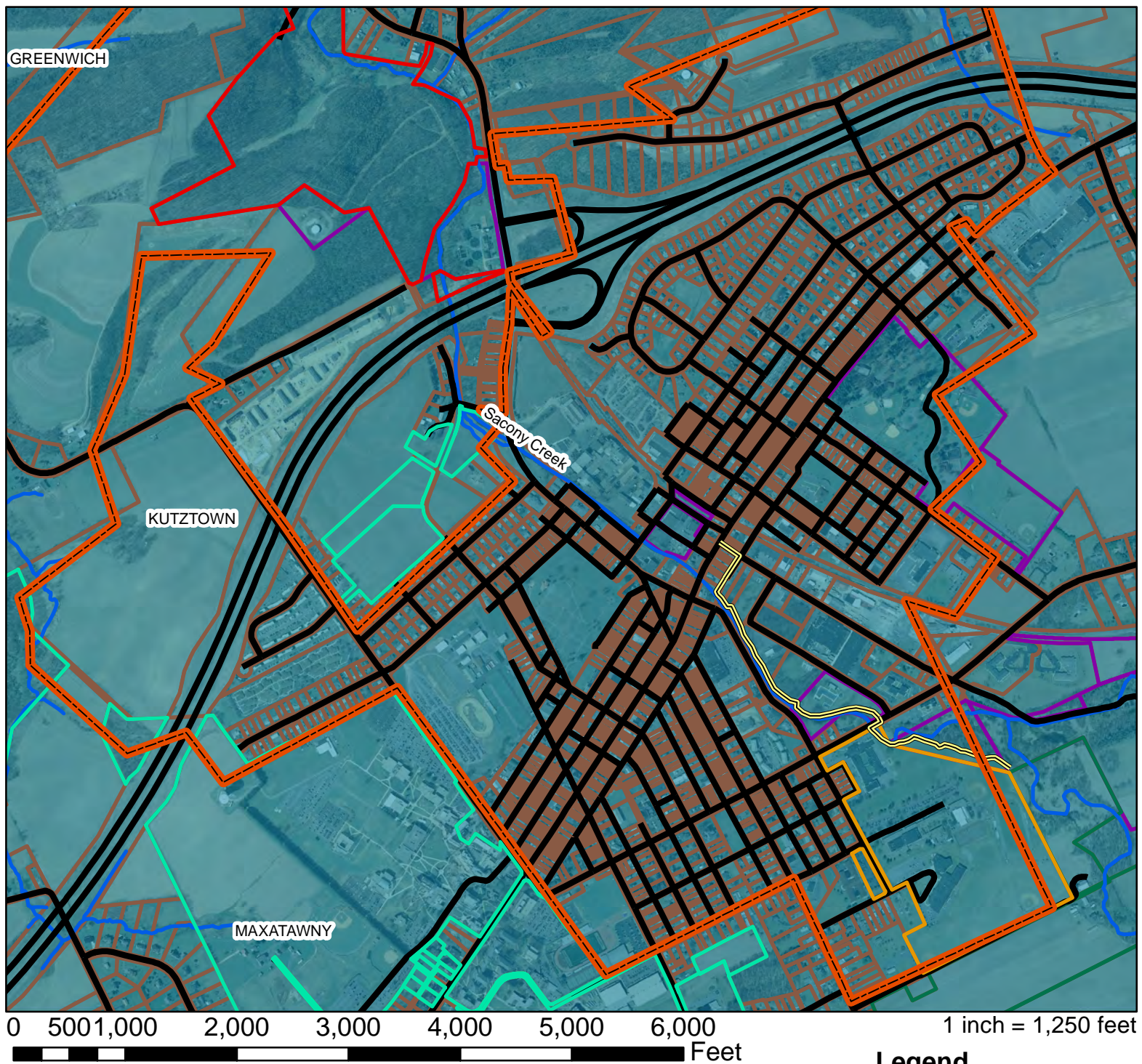
- Saucony Creek Trail
- Kutztown Area School
- Borough Property
- Streams
- Roads

Subsurface Geology

- Epler Fm
- Jacksonburg Fm
- Ontelaunee Fm










Saucony Trail - Kutztown Borough

Management Plan WatershedMap



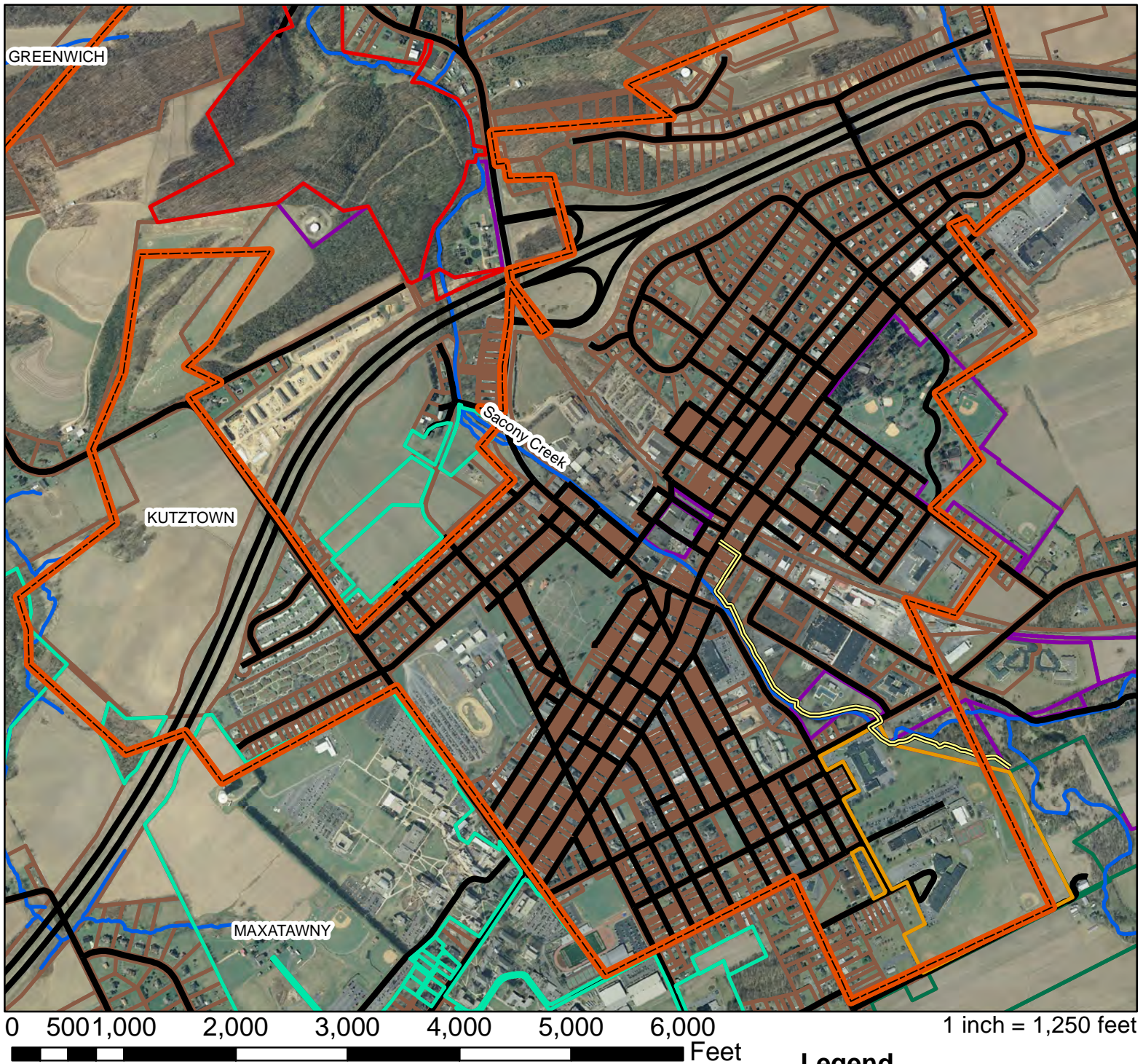
Saucony Creek Trail From Main Street to Kutztown area schools

Legend

-  Saucony Creek Trail
-  Ag Easements
-  Kutztown University
-  Kutztown Area School
-  North Park
-  Borough Property
-  Streams
-  Roads
-  Saucony Creek Watershed

Saucony Trail - Kutztown Borough

Management Plan Context Map



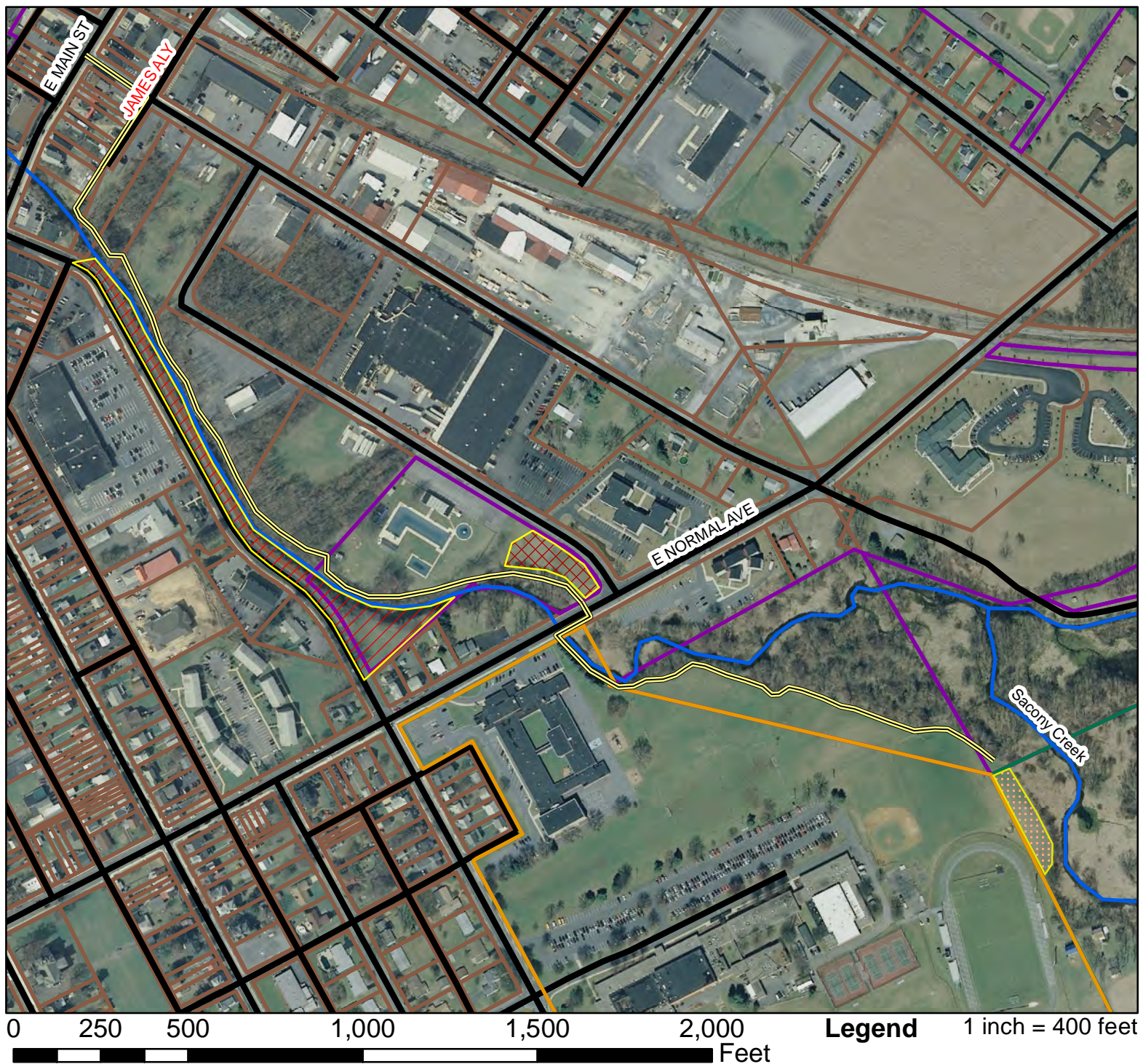
**Saucony Creek Trail
From Main Street to
Kutztown area schools**

Legend

- Saucony Creek Trail
- Ag Easements
- Kutztown University
- Kutztown Area School
- North Park
- Borough Property
- Streams
- Roads

Saucony Trail - Kutztown Borough

Management Plan



**Saucony Creek Trail
From Main Street to
Kutztown area schools**

Legend

- Saucony Creek Trail
- Kutztown Area School
- Borough Property
- Streams
- Roads
- Zone A
- Zone B
- Zone C
- Zone D
- Zone E

Maps Prepared by:
Berks Conservancy
January, 2013
25 N 11th Street
Reading, PA 19601
610-372-4992

1-3-08
cdw

RECEIVED

DEC 17 2007

Borough of Kutztown

p4
n2

Prepared By:

Keith Mooney, Esquire
Barley Snyder LLC
501 Washington Street, Fifth Floor
P O Box 942
Reading, PA 19603-0942
610 376 6651

REC BK05262-PG0414

RIGHT OF WAY - EASEMENT

2007070266 11/27/2007 11 46 59 AM 1

RCD FFF \$29.50

PAGE 1 of 5



BERKS
COUNTY ROD

ELLIE ANTOINE ROD

Return To:

Jaymes Vettrano
Borough of Kutztown
45 Railroad Street
Kutztown, Pennsylvania 19530

RECEIVED

JAN 4 2008

B.O.K. COMM. DEV. OFFICE

Property Address:

40 Normal Avenue
Kutztown, PA 19530-1729

EASEMENT AGREEMENT

THIS AGREEMENT made the 12th day of November, 2007, by and between Kutztown Area School District, a Third Class School District, whose address is 50 Trexler Avenue, Kutztown, Pennsylvania 19530 (the "Grantor"),

AND

The Borough of Kutztown, a Pennsylvania municipal Corporation, whose address is 45 Railroad Street, Kutztown, Pennsylvania 19530 (the "Grantee")

BACKGROUND

A The Grantor is the owner of a parcel of land situate along the south side of Normal Avenue, in the Borough of Kutztown, Berks County, Pennsylvania, more fully described and delineated on Exhibit "A" attached (the "Easement Area"),

B The Grantee is the owner of a parcel of land situate south of the Easement Area, in the Borough of Kutztown, Berks County, Pennsylvania ("Grantee's Land") and the Grantee has constructed and maintains a walking trail situated on the north side of Normal Avenue ("Trail"),

C The Grantee desires to utilize the Easement Area to construct and maintain an extension of the trail that would connect the Grantee's Land to the Trail, and

D The Grantor is willing to grant an easement to the Grantee permitting access to the Easement Area for such use as described above, on the terms and conditions hereinafter set forth

1. Construction, Landscaping and Sign Easement. The Grantor does hereby grant and convey unto the Grantee, its successors and assigns, for the benefit of the Grantee and all future owners of Grantee's Land, for free and uninterrupted right, liberty, privilege and easement at anytime a perpetual right-of-way and access easement, on the land described as the Easement Area, for the privilege of constructing, reconstructing, repairing, inspecting, and maintaining a passive recreation trail and associated landscaping and signage. This Easement shall remain in place and exist for the benefit of the Grantee and its invitees until such time as either the Grantee abandons the Sacony Trail, of which the Easement Area will become a part, or the parties hereto mutually agree to terminate said Easement. Prior to the construction of a recreation trail and associated landscaping and signage upon the Easement Area, Grantee shall notify Grantor of the approximate location of the recreation trail and associated landscaping and signage.

2. Maintenance of the Easement Area Except as provided in paragraph 6 below, the Grantee, its successors or assigns shall maintain any recreation trail and associated landscaping and signage located in the Easement Area at its expense.

3. Insurance. The Grantee or Grantee's successors or assigns shall carry public liability insurance, during any time period when the Grantee is causing construction to be performed in or upon the Easement Area and shall name the Grantor as an additional insured on said public liability insurance. The Grantee or Grantee's successors or assigns shall continue to carry public liability insurance for as long as the passive recreation trail and associated landscaping and signage is open for public use. Any insurance company providing public liability insurance to the Grantee pursuant to this paragraph 3 shall provide the Grantor with forty-five (45) days notice prior of its intention to terminate said policy (hereinafter "Insurance Termination Notice"). In the event that Grantor receives the Insurance Termination Notice, the Grantee shall have twenty (20) days to secure public liability insurance for the trail in conformity with the provisions set forth herein or the Grantor shall have the ability to terminate the easement granted herein.

4. Indemnity The Grantee, its successors or assigns shall indemnify, defend (with attorneys chosen by the Grantee) and hold the Grantor harmless from and against any claims, suits or causes of action arising directly from usage of the Trail and Easement Area by the general public, upon construction of same, and the work of the Grantee (including, but not limited to, the construction, reconstruction, repair and/or maintenance of the Trail), its successors and assigns, or its contractors, subcontractors and employees on the land of the Grantor subject to this easement. This provision shall remain in full force and effect until such time as the Easement granted herein is extinguished.

5. Benefit The rights granted and conveyed herein shall benefit the Grantee, its successors and assigns, as owners of any part of Grantee's Land, its respective agents, representatives, contractors or subcontractors, to maintain recreation trail and associated landscaping and signage placed on Grantee's Land.

6. Free Access The Grantor covenants that no buildings, structures, trees or shrubbery shall be erected within the Easement Area granted in this Agreement by the Grantor or anyone other than the Grantee. The Grantor agrees that in the event it unintentionally or mistakenly locates a structure, permanent or temporary, within the easement granted hereby, it shall solely be liable for the additional costs incurred in removing the structure should the Grantee need access to the land

7. Condition of Land The Grantee, by its acceptance of the easement, covenants to construct, reconstruct, repair, inspect, and maintain a passive recreation trail and associated landscaping and signage in the Easement Area at such time that the Grantee budgets to do such work

8. Titles The titles to the paragraphs of this Agreement are inserted as a matter of convenience only and in no way define, limit or describe the scope of this Agreement or the intent of any provisions hereof

9. Entire Agreement This Agreement contains the entire understanding of the parties concerning the subject matter hereof and no representations, inducements, promises or agreements, oral or otherwise, not embodied herein shall be of any force or effect

10. Construction of Laws. This Agreement shall be construed under the laws of the Commonwealth of Pennsylvania

11. Enforceability Any and all provisions herein contained shall be enforceable by the Grantor and/or the Grantee, their successors and assigns

IN WITNESS WHEREOF, the undersigned have executed this Agreement the day and year first above written

GRANTOR

Kutztown Area School District

By Don C. Vymazal Brenda Winkler
Name: Don Vymazal Brenda Winkler
Title: Board President Superintendent

GRANTEE

Borough of Kutztown

By Malcolm A. Eidle
Name: Malcolm Eidle
Title: Borough Council President

REC BK05262-PG0416

RIGHT OF WAY - EASEMENT

2007070266 11/27/2007 11 46 59 AM 1

BERKS COUNTY ROD

PAGE 3 of 5

**Appendix 7 - Invasive Plant Species for Control along the Sacony Trail, Kutztown, PA
(June 2013 Todd Underwood and Elaine Bartholomew)**

Plants are listed in order of priority for removal/control in each category

Trees

Norway maple (*Acer platanoides*)
Bradford pear (*Pyrus calleryana*)
white mulberry (*Morus alba*)

Shrubs and Vines

shrub honeysuckle (*Lonicera* spp.)
Japanese honeysuckle vine (*Lonicera japonica*)
multiflora rose (*Rosa multiflora*)
wineberry (*Rubus phoenicolasius*)
olive (*Elaeagnus* spp.)
buckthorn (*Rhamnus* spp.)
privet (*Ligustrum* spp.)
Japanese barberry (*Berberis thunbergii*)
mazzard cherry (*Prunus avium*)

Herbs

Canada thistle (*Cirsium arvesne*)
Japanese knotweed (*Polygonum cuspidatum*)
garlic mustard (*Alliaria petiolata*)
dame's rockets (*Hesperis matronalis*)
purple loosestrife (*Lythrum salicaria*)
Queen Anne's lace (*Daucus carota*)
smartweed (*Polygonum*)
common burdock (*Arctium minus*)
curled dock (*Rumex crispus*)
broad-leaved dock (*Rumex obtusifolius*)
bittersweet nightshade (*Solanum dulcamara*)

Appendix 8 – Plant Species Inventory

Plants of the Sacony Creek Trail, Kutztown, PA – Phase I (Main St to Normal Ave) (Feb 2009 Elaine Bartholomew)

List should be updated.

Wildflowers

Anemone, Canada *Anemone canadensis*
Aster, Crooked Stem *Aster prenanthoides*
Aster, False *Boltonia asteroides*
Aster, New England *Aster novae angliae*
Aster, White Wood *Aster divaricatus*
Avens, White *Geum canadense*
Beardtongue, Foxglove *Penstemon digitalis*
Beardtongue, Small's *Penstemon smallii*
Bee Balm *Monarda didyma*
Bee Balm, Spotted *Monarda punctata*
Bergamot, Wild *Monarda fistulosa*
Bishop's Cap *Mitella diphylla*
Bitter Cress, Pennsylvania *Cardamine pensylvanica*
Bittersweet, Oriental *Celastrus orbiculatus*
Blazing Star *Liatris spicata*
Bleeding Heart *Dicentra spectabilis*
Bleeding Heart, Fringed *Dicentra eximia*
Bloodroot *Sanguinaria Canadensis*
Blue-Eyed Grass *Sisyrinchium montanum*
Blue-Eyed Grass, Eastern *Sisyrinchium atlanticum*
Boneset *Eupatorium perfoliatum*
Buttercup, Hispid *Ranunculus hispidus*
Buttercup, Hispid *Ranunculus hispidus*
Camas, Eastern *Camassia scilloides*
Campion, Starry *Silene stellata*
Cardinal Flower *Lobelia cardinalis*
Carolina pea shrub *Thermopsis caroliniani*
Carrion flower *Smilax herbacea*
Carrot, Wild *Daucus carota*
Chickweed *Stellaria media*
Cleavers *Galium aparine*
Clover, Least Hop *Trifolium dubium*
Clover, White *Trifolium repens*
Clover, White *Trifolium repens*
Cohosh, Black *Cimicifuga racemosa*

Columbine, Eastern *Aquilegia canadensis*
Coneflower, Green-Headed *Rudbeckia laciniata*
Coneflower, Thin-Leaf *Rudbeckia triloba*
Coreopsis, Tall *Coreopsis tripteris*
Crowfoot, Bristly *Ranunculus pensylvanicus*
Culver's Root *Veronicastrum virginicum*
Cup Plant *Silphium perfoliatum*
Dames Rockets *Hesperis matronalis*
Dandelion *Taraxacum officinale*
Dolls Eyes *Actaea pachypoda*
Evening Primrose *Oenothera* spp.
Fame Flower *Talinum rugospermum*
Fleabane, Common *Erigeron philadelphicus*
Foamflower *Tiarella cordifolia*
Forget-me-not *Myosotis scorpioides*
Forget-me-not, Smaller *Myosotis laxa*
Garlic, Field *Allium vineale*
Gaura *Gaura Biennis*
Gentian, Downy *Gentiana puberulenta*
Gentian, Fringed *Gentiana crinita*
Gentian, Stiff *Gentiana quinquefolia*
Geranium, Wild *Geranium maculatum*
Ginger, Wild *Asarum canadense*
Goatsbeard *Aruncus dioicus*
Golden Alexander *Zizia aurea*
Goldenrod, Blue-Stemmed *Solidago caesia*
Goldenrod, Zigzag *Solidago flexicaulis*
Goldenseal *Hydrastis Canadensis*
Goldenstar *Chrysogonum virginianum*
Grape hyacinth *Muscari botryoides*
Grape, Fox *Vitis labrusca*
Grass of Parnassus *Parnassia glauca*
Grass, Bottlebrush *Elymus hystrix*
Ground Ivy *Glechoma hederacea*
Heal All *Prunella vulgaris*
Hemp, Indian *Apocynum cannabinum*
Herb Robert *Geranium robertianum*
Hog Peanut *Amphicarpa bracteata*
Honeysuckle, Bush *Lonicera morrowi*
Honeysuckle, Bush *Diervilla lonicera*
Honeysuckle, Japanese *Lonicera japonica*
Horse Balm (Stoneroot) *Collinsonia Canadensis*
Horse Gentian *Triosteum perfoliatum*
Indian Tobacco *Lobelia inflata*

Indigo, Wild Blue *Baptisia australis*
Iris, White Dwarf *Iris cristata* var *alba*
Ironweed, New York *Vernonia noveboracensis*
Ivy, Poison *Rhus radicans*
Jack-in-the-Pulpit *Arisaema atrorubens*
Jack-in-the-Pulpit *Arisaema triphyllum*
Jacob's Ladder *Polemonium reptans*
Jewelweed (Spotted Touch Me Not) *Impatiens capensis*
Joe Pye Weed, Eastern *Eupatorium dubium*
Larkspur, Tall *Delphinium exaltatum*
Lobelia, Great Blue *Lobelia siphilitica*
Lobelia, Pale Spiked *Lobelia spicata*
Loosestrife, Purple Fringed *Lysimachia ciliate* 'atropurpurea'
Marigold, Marsh *Caltha palustris*
Mayapple *Podophyllum peltatum*
Meadow Rue, Tall *Thalictrum polygamum*
Milkweed, Common *Asclepias syriac*
Milkweed, Swamp *Asclepias incarnata*
Mistflower *Eupatorium coelestinum*
Monkey Flower *Mimulus ringens*
Monkey Flower, Winged *Mimulus alatus*
Monkshood, Blue *Aconitum uncinatum*
Mustard, Black *Brassica rapa*
Mustard, Garlic *Alliaria officinalis*
Mustard, Tumble *Sisymbrium altissimum*
Nettle, Purple Dead *Lamium purpureum*
Nightshade, Bittersweet *Solanum dulcamara*
Nightshade, Enchanters *Circaea quadrisulcata*
Obedient Plant *Physostegia virginiana*
Pachysandra *Pachysandra terminalis*
Partridge Pea *Cassia fasciculata*
Pasque Flower *Anemone patens wolfgangiana*
Peppergrass, Wild *Lepidium campestre*
Periwinkle *Vinca Minor*
Plantain, Common *Plantago major*
Plantain, English *Plantago lanceolata*
Plantain, Robin's *Erigeron pulchellus*
Pokeweed *Phytolacca americana*
Queen of the Prairie *Filipendula rubra*
Quinine, Wild *Parthenium integrifolium*
Ragwort, Golden *Senecio aureus*
Ramps (Wild Leek) *Allium tricoccum*
Rattlesnake Master *Eryngium yucifolium*
Rhubarb, Wild

Rock Cress, Hairy *Arabis hirsuta*
Rose Mallow, Swamp *Hibiscus palustris*
Rose, Multiflora *Rosa Multiflora*
Rose, Swamp *Rosa palustris*
Rue Anemone *Anemonella thalictroides*
Sage, Lyre Leaved *Salvia lyrata*
Salvia, Blue *Salvia azurea*
Sea Oats, Northern *Chasmanthium latifolium*
Senna, Wild *Cassia marilandica*
Shooting Star *Dodecatheon meadia*
Skunk Cabbage *Symplocarpus foetidus*
Snakeroot, Clustered *Sanicula gregaria*
Solomon's Seal *Disporopsis pernyi*
Solomon's Seal, False *Smilacina racemosa*
Speedwell *Veronica spp.*
Speedwell, Thyme Leaved *Veronica serpyllifolia*
Spring Beauty *Claytonia virginica*
St. John's-Wort, Shrubby *Hypericum prolificum*
Star of Bethlehem *Ornithogalum umbellatum*
Stickseed, Virginia *Hackelia virginiana*
Stonecrop, Ditch *Penthorum sedoides*
Stonecrop, Wild *Sedum ternatum*
Strawberry, Indian *Duchesnea indica*
Sunflower, False (Oxeye) *Heliopsis helianthoides*
Sweet Cicely *Osmorhiza claytoni*
Sweet Flag *Acornus calamus*
Thistle *Cirsium spp.*
Toothwort *Dentaria diphylla*
Trillium, Great White *Trillium grandiflorum*
Tulip, Wild (Large scarlet w/ yellow margined ctr) *Tulipa eichleri*
Tulip, Wild (Red) *Tulipa batalinii 'Red Jewel'*
Tulip, Wild (Sulphur-yellow flushed orange) *Tulipa batalinii 'Bright Gem'*
Tulip, Wild (White w/ bronzy-green hints & yellow base) *Tulipa tarda*
Tulip, Wild (Yellow w/ broad carmine stripe on outer petals) *Tulipa kolpakowskiana*
Tulip, Wild (Yellow/ crimson outer petals) *Tulipa clusiana var. chrysantha*
Turtlehead, White *Chelone glabra*
Twin Leaf *Jeffersonia diphylla*
Violet, Common Blue *Viola papilionacea*
Violet, Confederate *Viola papilionacea*
Violet, Dog *Viola conspersa*
Violet, Early Blue *Viola palmate*
Violet, Freckles *Viola sororia 'freckles'*
Violet, White Dogtooth *Erythronium albidum*
Violet, Yellow *Viola pensylvanica*

Virginia Blue Bells *Mertensia virginica*
Virginia Creeper *Parthenocissus quinquefolia*
Waterleaf, Wild Virginia *Hydrophyllum virginianum*
Wind Flower, Grecian *Anemone blanda*
Wingstem *Actinomeris alternifolia*
Winter Cress, Common *Barbarea vulgaris*
Wood Betony *Pedicularis Canadensis*
Wood Sorrel, Violet *Oxalis violacea*
Wood Sorrel, Yellow *Oxalis europaea*
Yam, Wild *Dioscorea villosa*
Yellow Pimpernel *Taenidia integerrima*
Yellow Star Grass *Hopoxis hirsute*

Trees and Shrubs

Ash, Green *Fraxinus pennsylvanica*
Barberry *Berberis spp.*
Blackberry *Rubus allegheniensis*
Blackhaw *Viburnum prunifolium*
Bowman's Root *Gillenia trifoliata*
Buttonbush, *Cephalanthus occidentalis*
Catalpa, Northern *Catalpa speciosa*
Cedar, Red *Juniperus virginiana*
Cherry, Black *Prunus serotina*
Cherry, Wild *Prunus avium*
Cranberry, Highbush *Viburnum trilobum*
Currant, Wild Black *Ribes americanum*
Dogwood, Grey *Cornus racemosa*
Dogwood, Red Osier *Cornus sericea*
Dogwood, Silky *Cornus amomum*
Elderberry, American *Sambucus Canadensis*
Elm, Slippery *Ulmus rubra*
Fetterbush *Leucothoe racemosa*
Hackberry *Celtis occidentalis*
Honeysuckle, Amur *Lonicera maackii*
Honeysuckle, Bush *Diervilla lonicera*
Honeysuckle, Tartarian *Lonicera tatarica*
Indian Currant Coralberry *Symphoricarpus orbiculatus*
Maple, Ashleaf (Boxelder) *Acer negundo*
Maple, Norway *Acer platanoides*
Maple, Silver *Acer saccharinum*
Mulberry, Black *Morus nigra*
Olive, Autumn *Elaeagnus umbellata*
Raspberry, Black *Rubus occidentalis*

Sassafras *Sassafras albidum*
Spice Bush *Lindera benzoin*
Sumac, Staghorn *Rhus typhina*
Sweet Shrub *Calycanthus floridus*
Viburnum, Maple Leaved *Viburnum acerifolium*
Viburnum, Arrowwood *Viburnum dentatum*
Walnut, Black *Juglans nigra*
Willow, Peachleaf *Salix amygdloides*
Wineberry *Rubus phoenicolasius*
Witch Hazel *Hamamelis virginiana*
Yellowroot Shrub *Xanthorrhiza simplicissima*

Ferns

Lady Fern *Athyrium filix-femina*
Rattlesnake Fern *Botrychium virginianum*
Sensitive Fern *Onoclea sensibilis*

Plants of the Sacony Marsh and Trail, Kutztown, PA- Phase II (Normal Ave to Marsh) (Feb 2009 Elaine Bartholomew)

List should be updated.

Wildflowers

Agrimony *Agrimonia spp.*
Anemone, Canada *Anemone canadensis*
Aster, Bushy *Aster dumosus*
Aster, Heath *Aster pilosus*
Aster, Late Purple *Aster patens*
Aster, New York *Aster novi-belgii*
Aster, Purple-Stemmed *Aster puniceus*
Bean, Wild *Phaseolus polystachios*
Beardtongue, Foxglove *Penstemon digitalis*
Beardtongue, Hairy *Penstemon hirsutus*
Bedstraw, Rough *Galium asprellum*
Beggartick, Devil's *Bidens frondosa*
Beggartick, Nodding *Bidens cernua*
Bellwort *Uvularia perfoliata*
Bindweed, Hedge *Convolvulus sepium*
Bittersweet Nightshade *Solanum dulcamara*
Black-Eyed Susan *Rudbeckia serotina*
Blazing Star *Liatris spicata*
Bloodroot *Sanguinaria Canadensis*

Blue Violet, Common *Viola papilionacea*
Boneset *Eupatorium perfoliatum*
Bugleweed *Lycopus virginicus*
Buttercup, Common *Ranunculus acris*
Buttercup, Swamp *Ranunculus repens*
Butterfly Weed *Asclepias tuberosa*
Campion, Starry *Silene stellata*
Cardinal Flower *Lobelia cardinalis*
Celandine Poppy *Stylophorum diphyllum*
Clearweed *Pilea pumila*
Clover, Red *Trifolium pratense*
Columbine, Eastern *Aquilegia Canadensis*
Coneflower *Echinacea purpurea*
Coneflower, Green-Headed *Rudbeckia laciniata*
Coreopsis, Tall *Coreopsis tripteris*
Cress, Winter *Barbarea vulgaris*
Cucumber, Star *Sicyos angulatus*
Culver's Root *Veronicastrum virginicum*
Dame's Rocket *Hesperis matronalis*
Dock, Broadleaf *Rumex obtusifolius*
Dock, Curly-Leaf *Rumex crispus*
Dodder, Common *Cuscuta gronovii*
Doll's Eyes *Actaea pachypoda*
Evening Primrose, Common *Oenothera biennis*
Fleabane, Common *Erigeron philadelphicus*
Fleabane, Daisy *Erigeron annuus*
Foamflower *Tiarella cordifolia*
Forget-Me-Not, Smaller *Myosotis laxa*
Forget-Me-Not, True *Myosotis scorpioides*
Geranium, Wild *Geranium maculatum*
Germander *Teucrium canadense*
Goatsbeard *Aruncus dioicus*
Goldenrod, Blue-Stemmed *Solidago caesia*
Goldenrod, Late *Solidago gigantea*
Goldenrod, Sweet *Solidago odora*
Ground Ivy *Glechoma hederacea*
Herb Robert *Geranium robertianum*
Hog Peanut *Amphicarpa bracteata*
Hollow Joe-Pye-Weed, Hollow *Eupatorium fistulosum*
Honeysuckle, Japanese *Lonicera japonica*
Honeysuckle, Tartarian *Lonicera tatarica*
Indian Tobacco *Lobelia inflata*
Indigo, False Blue *Baptisia australis*
Ironweed, New York *Vernonia noveboracensis*

Jack-In-The-Pulpit *Arisaema atrorubens*
Knotweed, Virginia *Tovara virginiana*
Lamb's-Quarters *Chenopodium album*
Leatherflower *Clematis viorna*
Lobelia, Great Blue *Lobelia siphilitica*
Loosestrife, Fringed *Lysimachia ciliata*
Mayapple *Podophyllum peltatum*
Meadow-Rue, Tall *Thalictrum polygamum*
Milkweed, Swamp *Asclepias incarnata*
Milkweed, Common *Asclepias syriaca*
Mint, Wild *Mentha arvensis*
Moneywort *Lysimachia nummularia*
Monkey Flower *Mimulus ringens*
Monkey Flower, Square-Stemmed *Mimulus ringens*
Mountain Mint, Virginia *Pycnanthemum virginianum*
Mustard, Garlic *Alliaria officinalis*
Mustard, Tumble *Sisymbrium altissimum*
Nettle, False *Boehmeria cylindrical*
Nettle, Stinging *Urtica dioica* v. *procera*
Nightshade, Enchanter's *Circaea quadrisulcata*
Phlox, Creeping *Phlox stolonifera*
Plantain, Robin's *Erigeron pulchellus*
Pokeweed, Common *Phytolacca americana*
Queen of the Prairie *Filipendula rubra*
Ragweed, Common *Ambrosia artemisiifolia*
Rose, Swamp *Rosa palustris*
Sage, Lyre-Leaved *Salvia lyrata*
Sarsaparilla, Wild *Aralia nudicaulis*
Scullcap *Scutellaria* spp.
Shooting Star, Pink *Dodecatheon meadia*
Shooting Star, White *Dodecatheon meadia*
Skullcap, Veined *Scutellaria nervosa*
Skunk Cabbage *Symplocarpus foetidus*
Smartweed, Lady's-Thumb *Polygonum persicaria*
Smartweed, Long-Bristled *Polygonum cespitosum*
Smartweed, Pale *Polygonum lapathifolium*
Smartweed, Pennsylvania *Polygonum pennsylvanicum*
Smartweed, Water *Polygonum amphibium*
Sneezeweed *Helenium tenuifolium*
Solomon's Seal *Disporopsis pernyi*
Solomon's Seal, False *Smilacina racemosa*
Sowthistle, Common *Sonchus oleraceus*
Sowthistle, Spiny *Sonchus asper*
St. John's Wort, Spotted *Hypericum punctatum*

St. Johnswort, Shrubby *Hypericum prolificum*
Stickseed, Virginia *Hackelia virginiana*
Stitchwort, Lesser *Stellaria graminea*
Stonecrop, Ditch *Penthorum sedoides*
Stonecrop, Wild *Sedum ternatum*
Sweet Cicely *Osmorhiza claytoni*
Tearthumb, Arrow-Leaved *Polygonum sagittatum*
Texas Blue Bonnet *Lupinus texensis*
Thimbleweed *Anemone virginiana*
Touch-Me-Not, Pale *Impatiens pallida*
Touch-Me-Not, Spotted *Impatiens capensis*
Turtlehead *Chelone glabra*
Vervain, Blue *Verbena hastata*
Vervain, Narrow-Leaved *Verbena simplex*
Vervain, White *Verbena urticifolia*
Violet, Canada *Viola canadensis*
Violet, Dog *Viola conspersa*
Violet, Early Blue *Viola palmate*
Violet, Freckles *Viola sororia* 'freckles'
Water-Pepper, Mild *Polygonum hydropiperoides*
White Avens *Geum canadense*
Willow-Herb, Northern *Epilobium glandulosum*
Willow-Herb, Purple-Leaved *Epilobium coloratum*
Wineberry *Rubus phoenicolasius*
Wood Sorrel, Yellow *Oxalis europaea*

Shrubs and Trees

Alder, Speckled *Alnus rugosa*
Arrowwood, Northern *Viburnum recognitum*
Ash, Green *Fraxinus pennsylvanica*
Blackcurrant, European *Ribes nigrum*
Blackhaw, Smooth *Viburnum prunifolium*
Buttonbush *Cephalanthus occidentalis*
Catalpa, Northern *Catalpa bignonioides*
Cherry *Prunus spp.*
Clethra, Mountain *Clethra acuminata*
Cranberry, Highbush *Viburnum trilobum*
Dogwood, Flowering *Cornus florida*
Dogwood, Grey *Cornus racemosa*
Dogwood, Silky *Cornus amomum*
Elderberry, Common *Sambucus canadensis*
Grape, Wild *Vitis spp.*
Hackberry *Celtis occidentalis*

Hawthorn *Crataegus* spp.
Hydrangea, Oakleaf *Hydrangea quercifolia*
Ivy, Poison *Toxicodendron radicans*
Linden *Tilia Americana*
Locust, Black *Robinia pseudoacacia*
Maple, Ashleaf (Boxelder) *Acer negundo*
Maple, Norway *Acer platanoides*
Maple, Red *Acer rubrum*
Maple, Silver *Acer saccharinum*
Mulberry, White *Morus alba*
Nannyberry *Viburnum lentago*
Oak, Scarlet *Quercus coccinea*
Raspberry, Black *Rubus occidentalis*
Raspberry, Red *Rubus idaeus*
Redcedar, Eastern *Juniperus virginiana*
Rose, Wild *Rosa multiflora*
Spice Bush *Lindera benzoin*
Sweet Shrub *Calycanthus floridus*
Virginia Creeper *Parthenocissus quinquefolia*
Virgin's Bower *Clematis virginiana*
Walnut, Black *Juglans nigra*
Whiteoak, Eastern *Quercus alba*
Willow, Peachleaf *Salix amygdloides*
Winterberry *Ilex dicidua*
Yellowroot Shrub *Xanthorrhiza simplicissima*

Grasses (and Grass-like), Sedges and Rushes

Arrowhead *Sagittaria* spp.
Bulrush, Dark Green *Scirpus atrovirens*
Cattail, Common *Typha latifolia*
Dayflower, Asiatic *Commelina communis*
Elodea *Elodea* spp.
Garlic, Wild *Allium vineale*
Grass, Barnyard *Echinochloa crusgalli*
Grass, Bottlebrush *Elymus hystrix*
Grass, Eastern Blue-Eyed *Sisyrinchium atlanticum*
Grass, Yellow Star *Hypoxis hirsuta*
Horsetail *Equisetum* spp.
Iris, Larger Blue Flag *Iris versicolor*
Leek, Wild *Allium tricoccum*
Plantain, Water *Alisma triviale*
Quack Grass *Elytrigia repens*
Rush, Path *Juncus tenuis*

Rush, Soft *Juncus effusus*
Ryegrass, Perennial *Lolium perenne*
Sea Oats, Northern *Chasmanthium latifolium*
Sedge, Umbrella *Cyperus strigosus*
Timothy *Phleum pratense*
Wool Grass *Scirpus cyperinus*

Ferns

Fern, Bracken *Pteridium aquilinum*
Fern, Lady *Athyrium filix-femina*
Fern, Marginal Wood *Dryopteris marginalis*

Plants of the Meadow adjacent to observation deck (Aug 2011 Elaine Bartholomew)

Wildflowers

Oxeye or False Sunflower *Heliopsis helianthoides*
Purple Coneflower *Echinacea purpurea*
Blue Vervain *Verbena hastata*
Black-eyed Susan *Rudbeckia serotina*
Spotted Joe-Pye Weed *Eupatorium maculatum*
Canada Goldenrod *Solidago canadensis*
Spotted Touch-me-not *Impatiens capensis*
Wild Bergamot *Monarda fistulosa*
Slender-leaved Goldenrod *Solidago tenuifolia*
Wingstem *Actinomeris alternifolia*
Tall or Green-headed Coneflower *Rudbeckia laciniata*
Common Milkweed *Asclepias syriaca*
Boneset or Thoroughwort *Eupatorium perfoliatum*
New York Ironweed *Vernonia noveboracensis*
Hare Figwort *Scrophularia lanceolata*
Sneezeweed *Helenium autumnale*
Tall or Giant Sunflower *Helianthus giganteus*
Rough-stemmed Goldenrod *Solidago rugosa*

Appendix 9 – Animal Species Inventory

Invertebrates

No list to date. A survey is needed to develop.

Fish

No list to date. A survey is needed to develop.

Amphibians

(June 2013 – Todd Underwood)

Incomplete list. A survey is needed to develop.

Longtail Salamander *Eurycea longicauda*

Redback Salamander *Plethodon cinereus*

Eastern Gray Tree Frog *Hyla versicolor*

Northern Green Frog *Rana clamitans*

Reptiles

(June 2013 – Todd Underwood)

Incomplete list. A survey is needed to develop.

Common Snapping Turtle *Chelydra serpentina*

Northern Water Snake *Nerodia sipedon*

Eastern Garter Snake *Thamnophis sirtalis*

Birds

(June 2006 Jacob Charlton and Todd Underwood)

List should be updated.

Blackbird, Red-winged *Agelaius phoeniceus*

Bluebird, Eastern *Sialia sialis*

Bunting, Indigo *Passerina cyanea*

Cardinal, Northern *Cardinalis cardinalis*

Catbird, Gray *Dumetella carolinensis*

Chickadee, Black-capped *Poecile atricapilla*

Chickadee, Carolina *Poecile carolinensis*

Cowbird, Brown-headed *Molothrus ater*
Creeper, Brown *Certhia americana*
Crow, American *Corvus brachyrhynchos*
Crow, Fish *Corvus ossifragus*
Cuckoo, Black-billed *Coccyzus erythrophthalmus*
Cuckoo, Yellow-billed *Coccyzus americanus*
Dove, Mourning *Zenaida macroura*
Dove, Rock *Columba livia*
Duck, Mallard *Anas platyrhynchos*
Duck, Wood *Aix sponsa*
Eagle, Bald *Haliaeetus leucocephalus*
Finch, House *Carpodacus mexicanus*
Finch, Purple *Carpodacus purpureus*
Flycatcher, Acadian *Empidonax virescens*
(Flycatcher,) Eastern Kingbird *Tyrannus tyrannus*
(Flycatcher,) Eastern Phoebe *Sayornis phoebe*
(Flycatcher,) Eastern Wood Peewee *Contopus virens*
Flycatcher, Great-crested *Myiarchus crinitus*
Flycatcher, Least *Empidonax minimus*
Flycatcher, Willow *Empidonax traillii*
Gnatcatcher, Blue-gray *Polioptila caerulea*
Goldfinch, American *Carduelis tristis*
Goose, Canada *Branta canadensis*
Goose, Snow *Chen caerulescens*
Grackle, Common *Quiscalus quiscula*
Grosbeak, Rose-breasted *Pheucticus ludovicianus*
Gull, Herring *Larus argentatus*
Harrier, Northern *Circus cyaneus*
Hawk, Cooper's *Accipiter cooperii*
Hawk, Red-tailed *Buteo jamaicensis*
Heron, Great Blue *Ardea herodias*
Heron, Green *Butorides virescens*
Hummingbird, Ruby-throated *Archilochus colubris*
Jay, Blue *Cyanocitta cristata*
Junco, Dark-eyed *Junco hyemalis*
Killdeer *Charadrius vociferus*
Kingfisher, Belted *Ceryle alcyon*
Kinglet, Golden-crowned *Regulus satrapa*
Kinglet, Ruby-crowned *Regulus calendula*
Mockingbird, Northern *Mimus polyglottos*
Nighthawk, Common *Chordeiles minor*
Nuthatch, Red-breasted *Sitta canadensis*
Nuthatch, White-breasted *Sitta carolinensis*
Oriole, Baltimore *Icterus galbula*

Oriole, Orchard *Icterus spurius*
Owl, Great Horned *Bubo virginianus*
Purple Martin *Progne subis*
Robin, American *Turdus migratorius*
Sandpiper, Solitary *Tringa flavipes*
Siskin, Pine *Carduelis pinus*
Sparrow, American Tree *Spizella arborea*
Sparrow, Chipping *Spizella passerine*
Sparrow, Field *Spizella pusilla*
Sparrow, House *Passer domesticus*
Sparrow, Song *Melospiza melodia*
Sparrow, White-crowned *Zonotrichia leucophrys*
Sparrow, White-throated *Zonotrichia albicollis*
Starling, European *Sturnus vulgaris*
Swallow, Barn *Hirundo rustica*
Swallow, Northern Rough-winged *Stelgidopteryx serripennis*
Swallow, Tree *Tachycineta bicolor*
Swan, Mute *Cygnus olor*
Swift, Chimney *Chaetura pelagica*
Tanager, Scarlet *Piranga olivacea*
Towhee, Eastern *Pipilo erythrophthalmus*
Thrasher, Brown *Toxostoma rufum*
Thrush, Hermit *Catharus guttatus*
Thrush, Swainson's *Catharus ustulatus*
Thrush, Wood *Hylocichla mustelina*
Titmouse, Tufted *Baeolophus bicolor*
Vireo, Blue-headed *Vireo solitarius*
Vireo, Philadelphia *Vireo philadelphicus*
Vireo, Warbling *Vireo gilvus*
Vulture, Black *Coragyps atratus*
Vulture, Turkey *Cathartes aura*
(Warbler,) American Redstart *Setophaga ruticilla*
Warbler, Black and White *Mniotilta varia*
Warbler, Blackpoll *Dendroica striata*
Warbler, Chestnut-sided *Dendroica pensylvanica*
(Warbler,) Common Yellowthroat *Geothlypis trichas*
Warbler, Magnolia *Dendroica magnolia*
(Warbler,) Northern Parula *Parula americana*
(Warbler,) Northern Waterthrush *Seiurus noveboracensis*
Warbler, Palm *Dendroica palmarum*
Warbler, Pine *Dendroica pinus*
Warbler, Prairie *Dendroica discolor*
Warbler, Yellow *Dendroica petechia*
Warbler, Yellow-rumped *Dendroica coronata*

Waxwing, Cedar *Bombycilla cedrorum*
Woodpecker, Downy *Picoides pubescens*
Woodpecker, Hairy *Picoides villosus*
(Woodpecker,) Northern Flicker *Colaptes auratus*
Woodpecker, Red-bellied *Melanerpes carolinus*
Woodpecker, Red-headed *Melanerpes erythrocephalus*
(Woodpecker,) Yellow-bellied Sapsucker *Sphyrapicus varius*
Wren, Carolina *Thryothorus ludovicianus*
Wren, House *Troglodytes aedon*
Wren, Winter *Troglodytes troglodytes*

Mammals
(June 2013 – Todd Underwood)

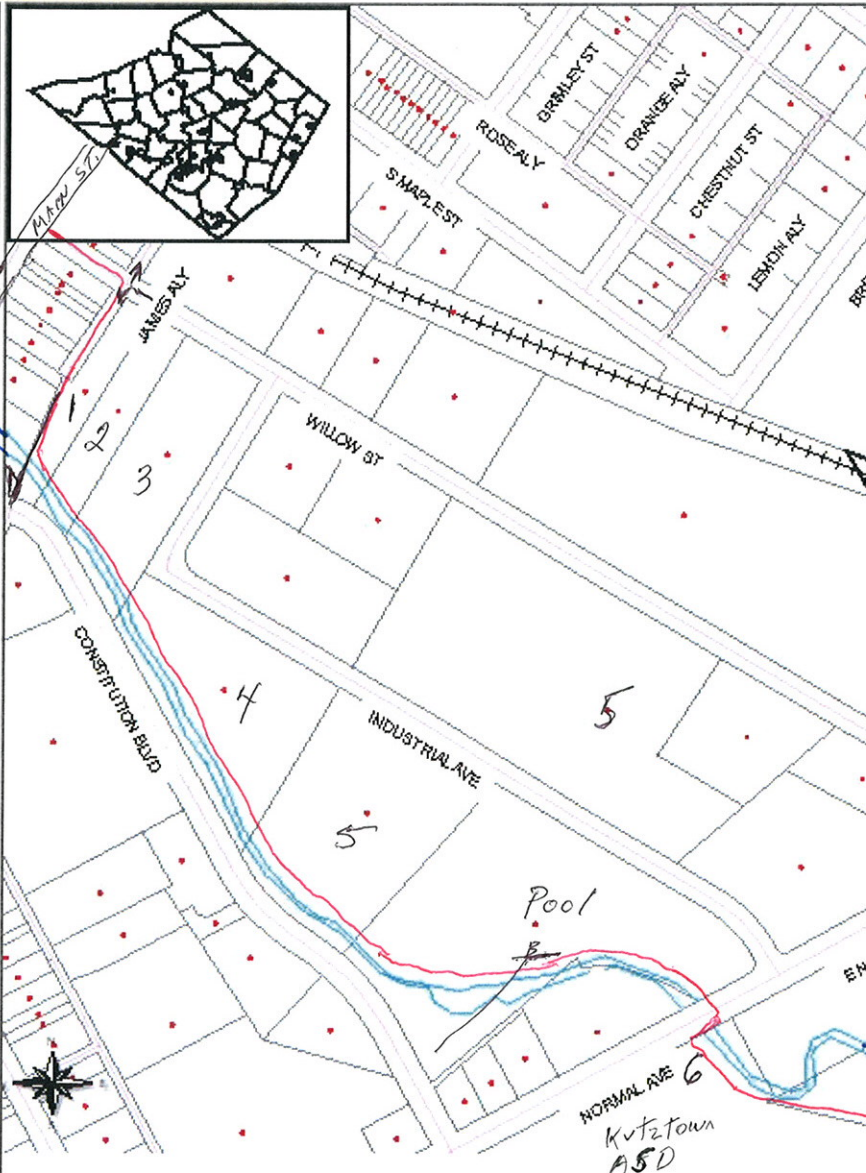
Incomplete list. A survey is needed to develop.

Mink *Mustela vison*
Woodchuck *Marmota monax*
Gray Squirrel *Sciurus carolinensis*
Muskrat *Ondatra zibethicus*
Eastern Cottontail *Ondatra zibethicus*

KUTZTOWN BOROUGH SACONY TRAIL EASEMENTS or AGREEMENTS

Berks County
PENNSYLVANIA

Parcel Viewer



Layers

Visible Active

- ☒ Parcel Hot Spot
- ☐ School District
- ☒ Municipalities
- ☒ Highways
- ☒ Roads
- ☒ Railroad
- ☒ Streams

Refresh Map

Quick Hints:

1. Zoom in on the area of interest until you see the red dot "Hot Spots" on the parcels.
2. Click the identify button, , then click the Hot Spot on the parcel to see the property record.

To search by name, address, or PIN, try the find button

Properties that should have easements or agreements

- | | | | |
|----------------------------|---------------------|-----------------------------|------------------|
| 1. C Joy LLC | 114 S. Laurel St. | address - Willow St. | PIN 544308889187 |
| 2. James G DOWIK | 178 GUN CLUB RD. | address - Willow St. | 544308980153 |
| 3. James G DOWIK | " | address - 8 Willow St. | 544308981054 |
| 4. Clarence Shirk | 229 QUARRY RD | address - 85 Industrial Ave | 544308972566 |
| 5. East Penn Manufacturing | P.O. Box 147, Lyons | address - Willow St. | 544312978448 |
| 6. KASD | | address - Constitution | 545309069023 |

- A - sewer line easement - NOT SURE if this has any effect
 B - sewer line on K-Town Borough property

you found this already